

Morning Dew



MARKET RECAP

COMPOSITE INDEX (IHSG)

Last

6,150.3

Change

+0.09%

Volume
(million shares)

20,027

Value
(billion IDR)

12,742

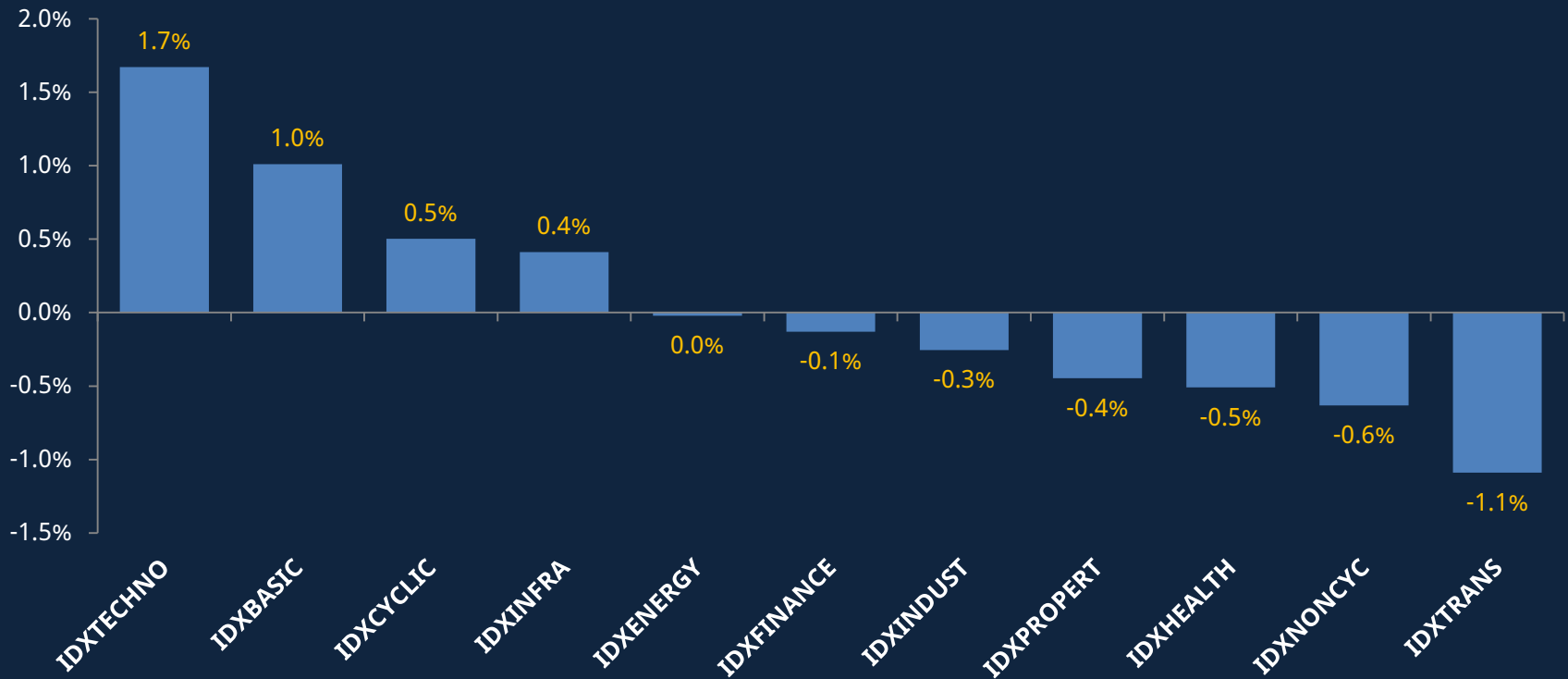
Frequency
(times)

1,359,448

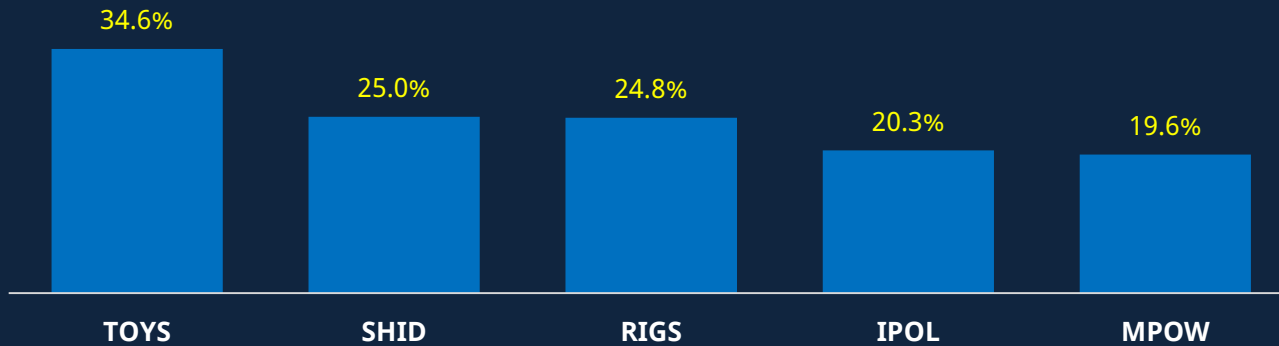


MARKET RECAP

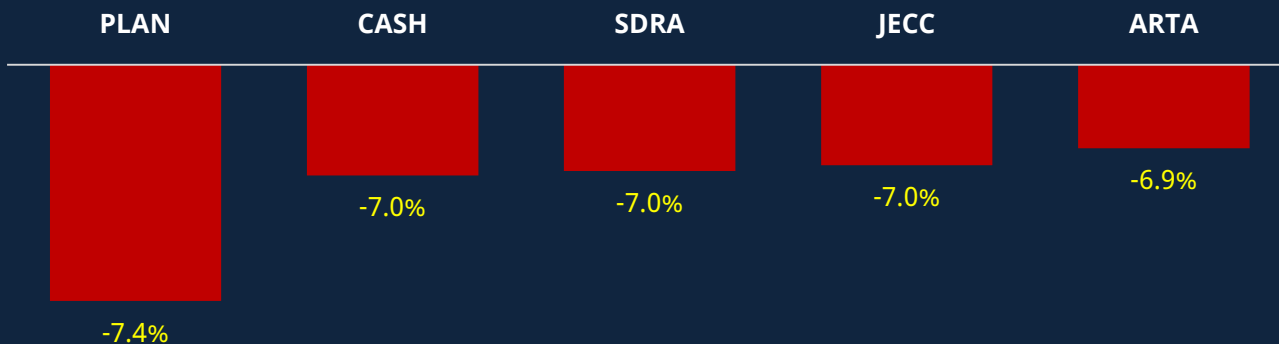
SECTORAL INDEXES



TOP GAINERS



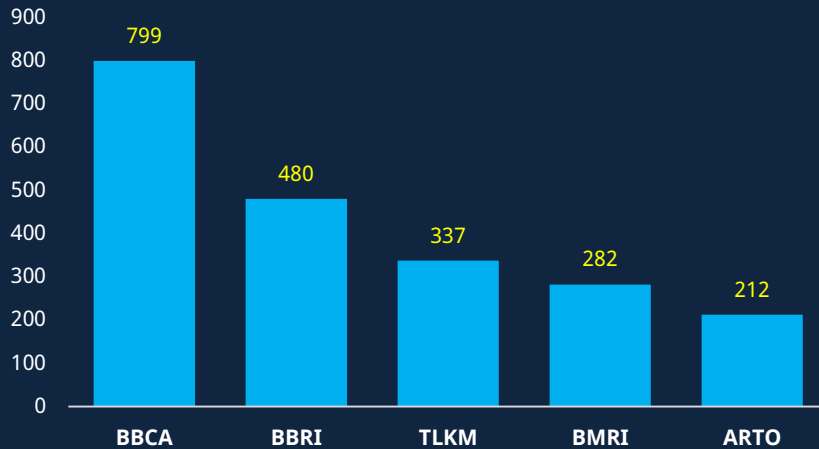
TOP LOSERS



MARKET RECAP

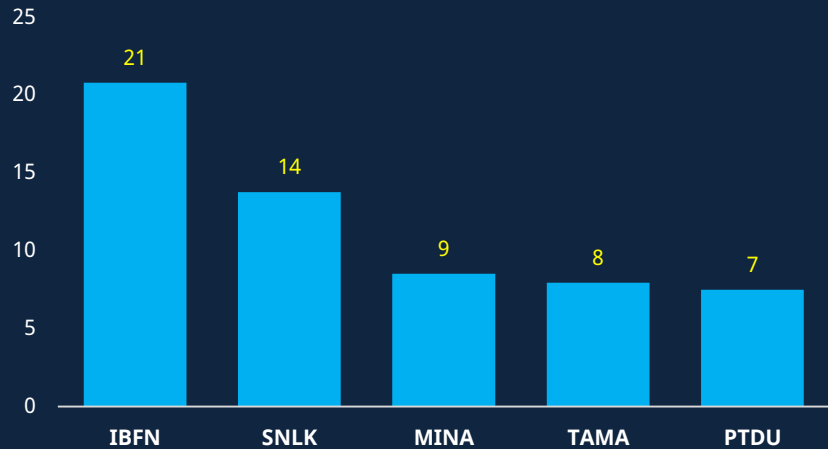
TOP MARKET CAP

(In trillion IDR)



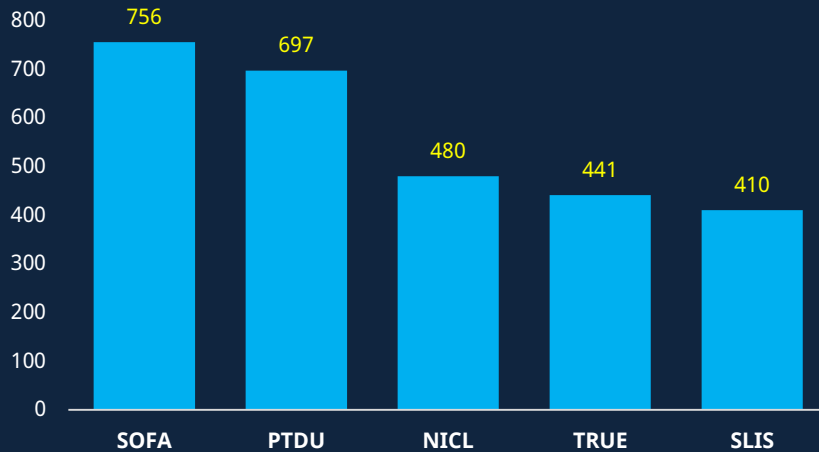
TOP TRADING VOLUME

(In million shares)



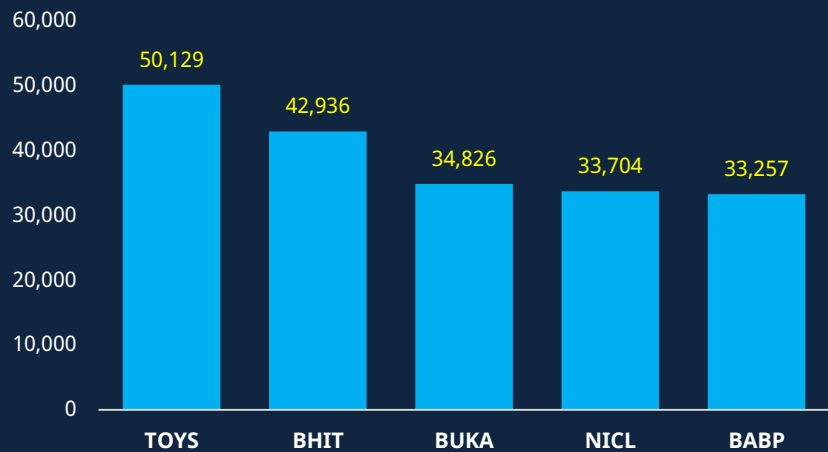
TOP TRADING VALUE

(In billion IDR)



TOP TRADING FREQUENCY

(In times traded)



BBRI. ID

BBRI SET THE RIGHT ISSUE PRICE AT Rp3,400 PER SHARES

PT Bank Rakyat Indonesia Tbk (BBRI) will conduct a rights issue with a maximum of 28,677,086,000 Series B shares with a nominal value of Rp50/share with the exercise price at Rp3,400/share. So, in total through this right issue BBRI will reap funds in the amount of Rp95.92 T. The state capital deposit will be paid in the form of 99.9% of the total issued capital in Pegadaian or 6,249,999 Series B shares with a value of Rp48.67 T and 99.9% of the total issued capital in Civil National Capital (PNM) or as much as Rp3,799,999 Series B shares with a value of Rp6.1 T. Thus, the company's potential funds to be obtained from the public will reach Rp41.1 T. The details of the rights issue schedule was September 7, 2021 for the regular market and negotiations. While on September 9, 2021 for the cash market. Furthermore, the start date for trading shares without Preemptive Rights is September 8, 2021 for the regular market and negotiations. Then on September 10, 2021 for the cash market. After that, the distribution date of the Preemptive Rights is September 10, 2021 and the pre-listing of shares on the Indonesia Stock Exchange (IDX) on September 13, 2021. The trading period for the Rights is September 13-22, 2021.

DNET. ID

DNET DIVERSIFY TO TELECOMMUNICATION BUSINESS

PT Indoritel Makmur Internasional Tbk (DNET) with its main business in the modern retail sector, starting to develop a fiber optic network business with the FiberStar trademark, through PT Mega Access Persada, a broadband fiber optic network serving customers throughout Indonesia. As of 31 December 2020, FiberStar optical fiber network had reached 17 provinces, 135 cities/districts, with a length of 28,714 km. This coverage increased by 62.6% compared to 2019.



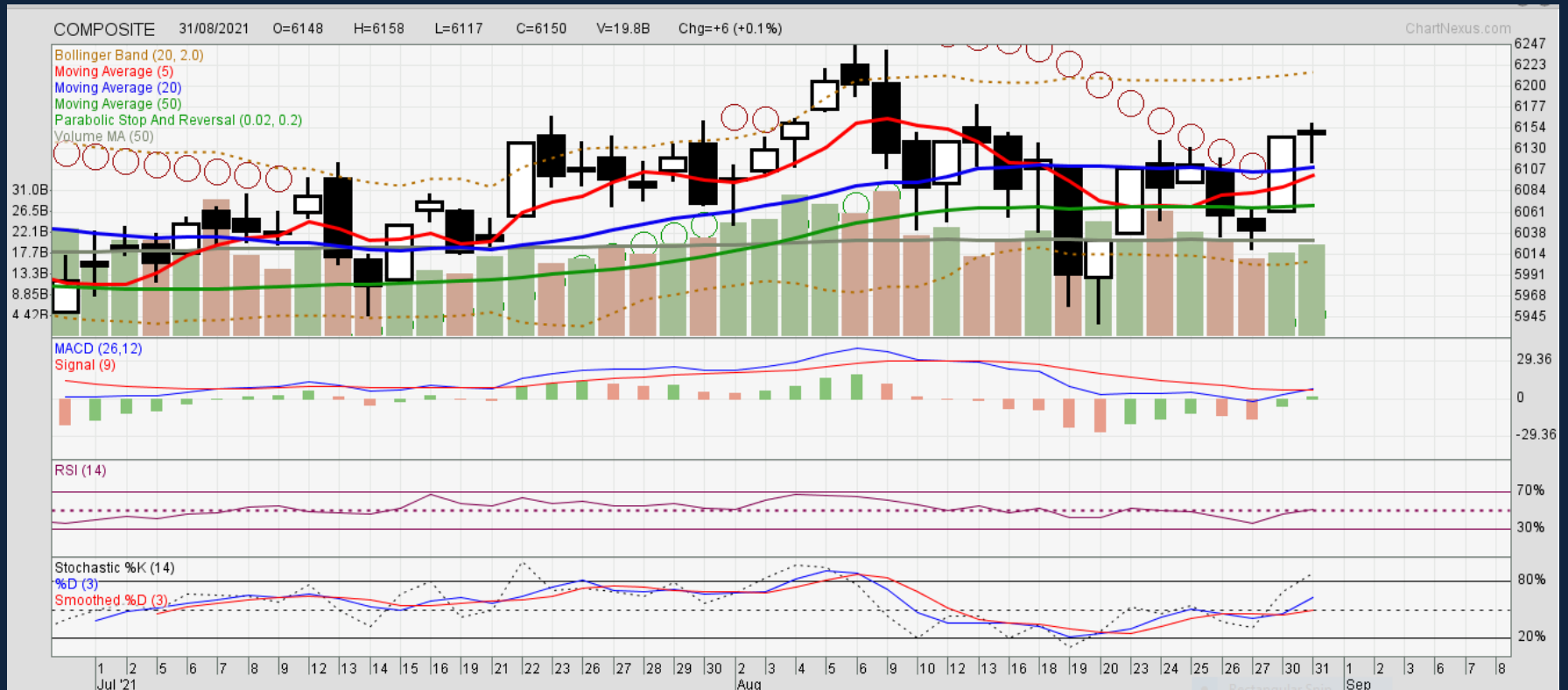
RECAP AS OF 31 AUGUST 2021

	<u>M/M</u>	<u>YTD</u>
JCI	1.3%	0.7%
LQ 45	5.3%	-12.3%
IDX INDUST	7.4%	-0.7%
IDX FINANCE	3.2%	-0.3%
IDX TRANS	1.7%	13.6%
IDX BASIC	1.0%	-13.5%
IDX CYCLIC	0.7%	8.2%
IDX INFRA	0.6%	5.8%
IDX NON CYCLIC	0.3%	-15.3%
IDX PROPERTY	0.2%	-12.6%
IDX ENERGY	-1.0%	-4.2%
IDX HEALTH	-1.4%	0.3%
IDX TECHNO	-6.3%	486.7%

** for YTD, the calculation since 25 January 2021 due to the new sector classification except for JCI*



TECHNICAL OUTLOOK



JCI BARELY UNCHANGED

JCI closed slightly higher by +0.09% at 6,150.3 and changed its Support from 5,947/884 to 6,138/021, while the key Resistance hanging at 6,180/263. PSAR red dot just hit the candlestick, and PSAR green dot just appeared while the EMA 5&20 is still in the dead cross pattern. MACD, RSI, and Stochastic are still in the negative but started to bouching up headed to the positive area.



STOCK PICKS

ICBP

ENTRY	RESISTANCE
8,175	8,850
TARGET	SUPPORT
8,750	8,200
STOP	GAIN/LOSS
7,875	+250 / +3.06%
LAST	STATUS
8,425	BUY / OPEN

JPFA

ENTRY	RESISTANCE
1,710	1,870
TARGET	SUPPORT
1,980	1,535
STOP	GAIN/LOSS
1,450	+100 / +5.85%
LAST	STATUS
1,810	BUY / OPEN

MEDC

ENTRY	RESISTANCE
482	525
TARGET	SUPPORT
550	466
STOP	GAIN/LOSS
430	-6 / -1.24%
LAST	STATUS
476	BUY / OPEN



DISCLAIMER

This report is prepared by PT Minna Padi Investama Sekuritas, Tbk. for information purposes only. It is not to be used or considered as an offer or the solicitation of an offer to sell or to buy or to subscribe for securities or other financial instruments. The report has been prepared without regard to individual financial circumstances, needs or objectives of the person who receive it. The securities discussed in this report may not be suitable for all investors. The appropriateness of any particular investment or strategy whether opined on or referred to in this report or otherwise will depend on the investor's individual circumstances and objectives and should be independently evaluated and confirmed by such investor and if appropriate, with his/her professional advisers independently before adaptation or implementation (either as is or varied).

RESEARCH TEAM

Andre Setiawan

Andre.setiawan@minnapadi.com

Bayu Santoso

bayusantosa@minnapadi.com

Geri Eka Putra

gery@minnapadi.com

PT MINNA PADI INVESTAMA SEKURITAS, Tbk.

Head Office

Equity Tower 11th Floor
Sudirman Central Business District Lot 9
Jl. Jend. Sudirman Kav. 52-53
Jakarta Selatan, Indonesia
Tel: +62 21 525 5555
Fax: +62 21 527 1527

Investment Gallery

SOLO

Jl. Monginsidi No. 27A/B
Solo, 57129
Tel: +62 271 667 679
Fax: +62 271 635 470

